

May | 14

Technical Publications



ZULTYS
INNOVATE | COMMUNICATE | COLLABORATE

Running Multiple Instances of MXIE & Admin UI

Author: Zultys Technical Support

This document covers how to run multiple versions and/or instances of MXIE and MX Admin UI. This is especially helpful for our Channel Partners who will have the need to quickly and easily access multiple versions of the Admin UI on a daily basis.

MXIE and Admin UI are version specific and is not backwards compatible in any way.

No part of this document may be reproduced or transmitted in any form or by any means, electronic or mechanical, for any purpose, without the express written permission of Zultys, Inc. Under the law, “reproducing” includes translating the document’s content into another language or format.

Information in this document is subject to change without notice. Every effort has been made to ensure that the information in this document is accurate. Zultys, Inc. is not responsible for printing or clerical errors. Any troubleshooting suggestions or suggestions for resolving common issues included in this document are recommendations made by Zultys Technical Support team and are not guaranteed to resolve every issue the reader may encounter.

Table of Contents

1	<u>MXADMINISTRATOR UI.....</u>	<u>3</u>
1.1	MULTIPLE INSTANCES OF MX ADMIN UI	3
1.2	MULTIPLE INSTALLS OF MXADMINISTRATOR UI.....	4
2	<u>MXIE</u>	<u>5</u>
2.1	MULTIPLE INSTANCES OF MXIE	5
2.2	MULTIPLE INSTALLS MXIE	6

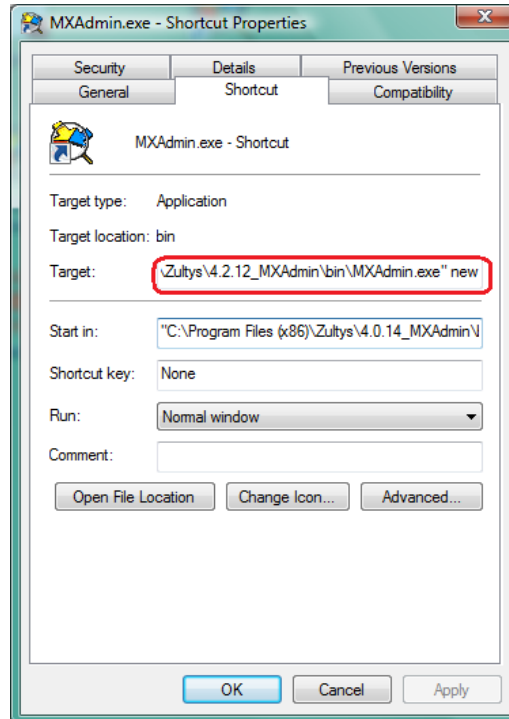
1 MXAdministrator UI

MXAdministrator UI is used to program the MXvirtual, MX250 and MX30. It is version specific that is if the MX is running firmware 7.2.4 you must be using MXAdministrator UI for version 7.2.4. The MXAdministrator UI is not backwards compatible.

1.1 Multiple Instances of MX Admin UI

To run multiple instances of MXAdministrator UI you need to modify the standard short cut for MXAdmin.exe. To modify the shortcut, right click on the shortcut and choose *properties* and click on the *Shortcut* tab.

Modify the *Target:* location by adding *<space> new* AFTER the quotation marks.



1.2 Multiple Installs of MXAdministrator UI

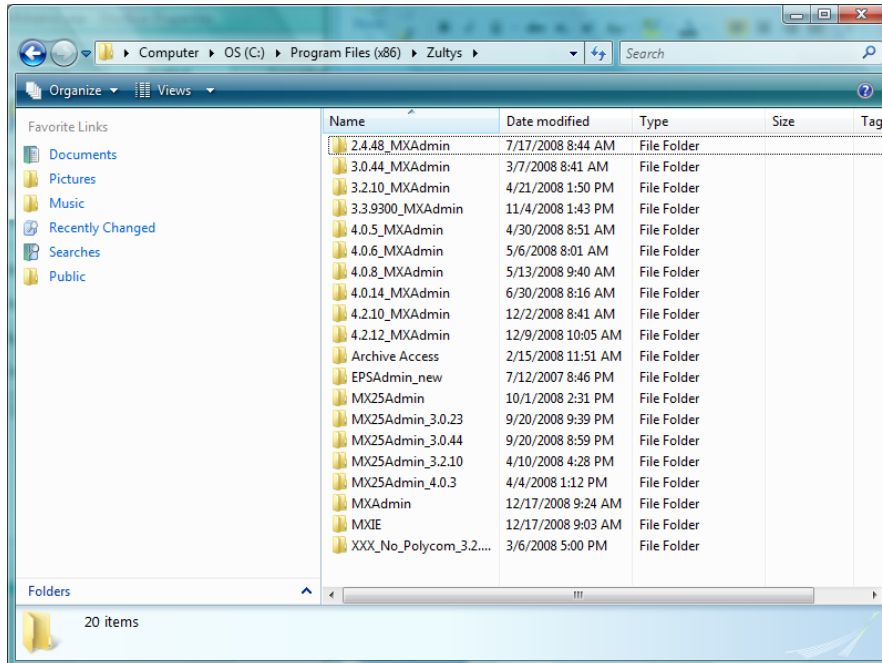
This is handy for Channel Partners, who will be keeping multiple version of the MXAdministrator UI installed on their computer.

To keep multiple versions of MXAdministrator UI, you need to copy the MXAdministrator UI into separate directories and create new shortcuts for each version.

Install the MXAdministrator ui on your computer using the default directory assignment, which is C:\Program Files\Zultys\MXAdmin. Once the application is installed, copy the entire MXAdmin folder leaving it under C:\Program Files\Zultys\ and give it a new name referencing the version it is for example MXAdmin_8_0_7. You can then create a shortcut to the executable file. The executable file is named MXAdmin.exe and is located in the bin folder (C:\Program Files\Zultys\MXAdmin_8_0_7\bin)



It is important to keep the original MXAdmin folder in place as it is the application will fail to launch.



2 MXIE

For each instance of MXIE running on the same computer, you must use a different user name. If you attempt to use the same user name for each instance, you will receive an error.



You may only run a single softphone at a time.

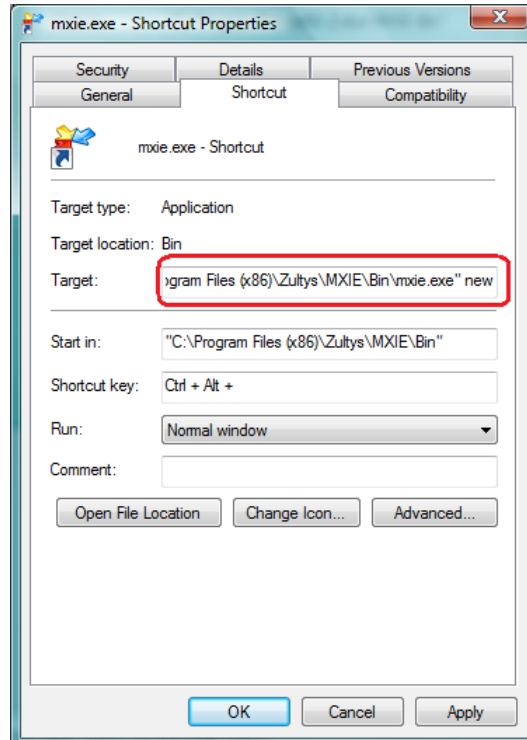


You may only run a single instance of Video at a time

2.1 Multiple Instances of MXIE

To run multiple instances of MXIE you need to modify the standard short cut for MXAdmin.exe. To modify the shortcut, right click on the shortcut and choose *properties* and click on the *Shortcut* tab.

Modify the *Target:* location by adding <space> *new* AFTER the quotation marks.



2.2 Multiple Installs MXIE

This is handy for Channel Partners, who will be keeping multiple version of the MXIE installed on your computer.

To keep multiple versions of MXIE, you need to copy MXIE into separate directories and create new shortcuts for each version.

Install MXIE on your computer using the default directory assignment, which is C:\Program Files\Zultys\MXIE. Once the application is installed, copy the entire MXIE folder leaving it under C:\Program Files\Zultys\ and give it a new name referencing the version it is for example MXIE_6_0_3. You can then create a shortcut to the executable file. The executable file is named MXIE.exe and is located in the bin folder (C:\Program Files\Zultys\MXAdmin_6_0_3\bin)



It is important to keep the original MXIE folder in place as it is the application will fail to launch.

